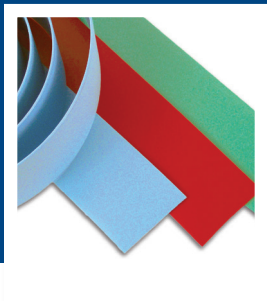
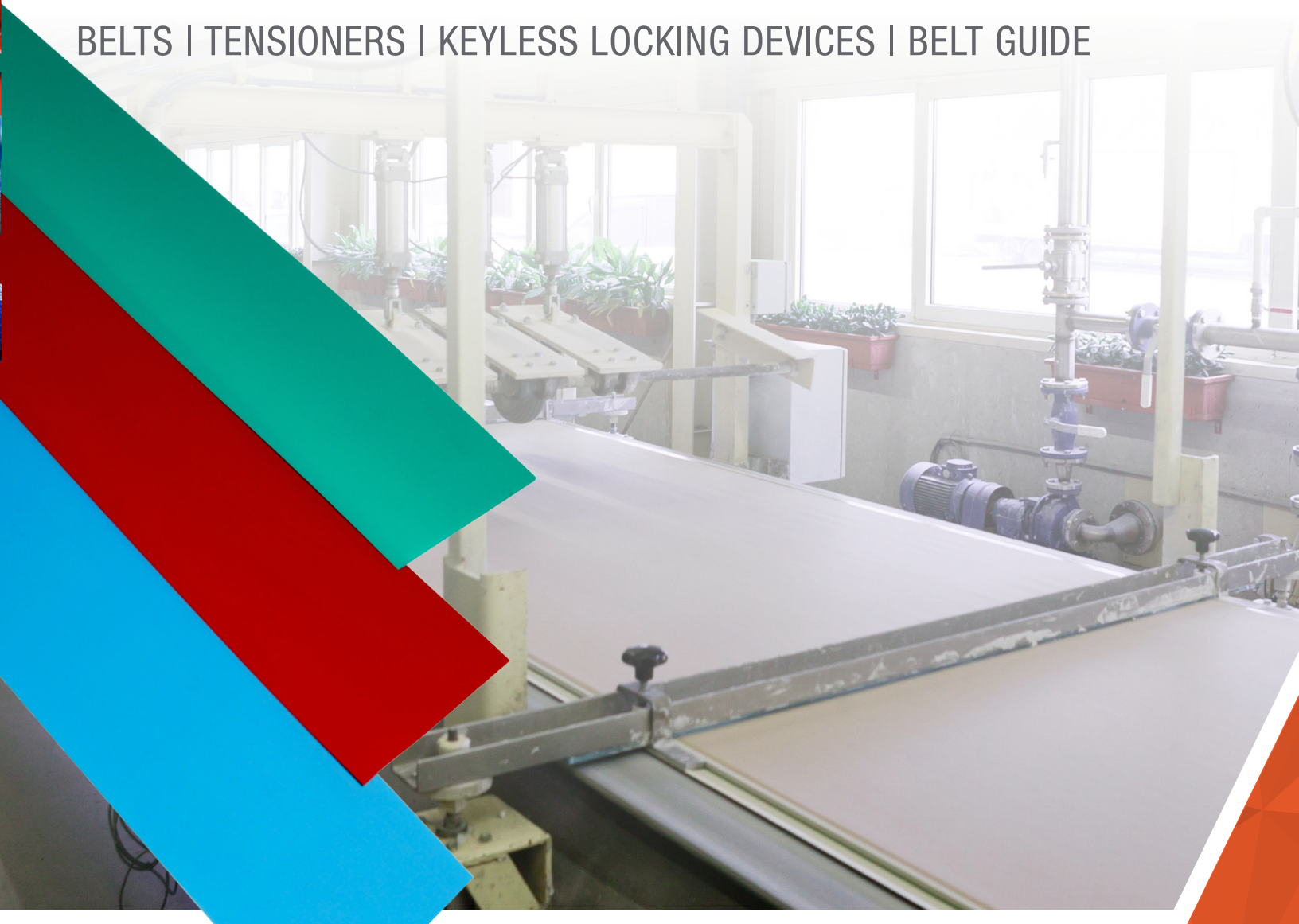


GYPSUM WALLBOARD MANUFACTURING

BELTS | TENSIONERS | KEYLESS LOCKING DEVICES | BELT GUIDE



EAGLE® Taper Edge Band

Long-lasting, minimal stretch replacement for PVC Bands on wallboard forming lines.

- Lasts longer than PVC bands — fewer replacements and fewer hassles
- Negligible band stretch — the same perfect impression day 1 and day 100
- Fit and forget installation — reduced labor and downtime costs
- Say goodbye to heat cracks with temperature resistance up to 180°F (82°C)
- Thermal splicing for a tough, seamless, flexible joint that maintains a perfect indentation; forget about using duct tape on your production line
- Available in different thicknesses and profiles to suit your manufacturing needs

Taper Edge Band Return Roller

Prevents surface scoring due to Taper Edge Band rubbing against worn return support brackets.

- Easy to install mounting bracket with hand knob for quick adjustment and release
- 360° adjustment for optimum positioning
- Solid polymer plain bearing allows low-friction rotation
- Quickly switch out rollers for periodic cleaning and virtually eliminate downtime



POWERWIST MOVE® High Performance Conveyor Belting

POWERWIST MOVE High Performance Conveyor Belting is easily made to length by hand without welding and rolls right on existing equipment. Quickly and permanently replace endless polyurethane and rubber belts on feed conveyor lines

Easy, Fast Installation with No Welding Required

- Make to length by hand, without tools
- No curing time, just twist and go!

Longer Belt Life

- Extremely high strength and excellent performance in harsh environments

Simple Inventory Management

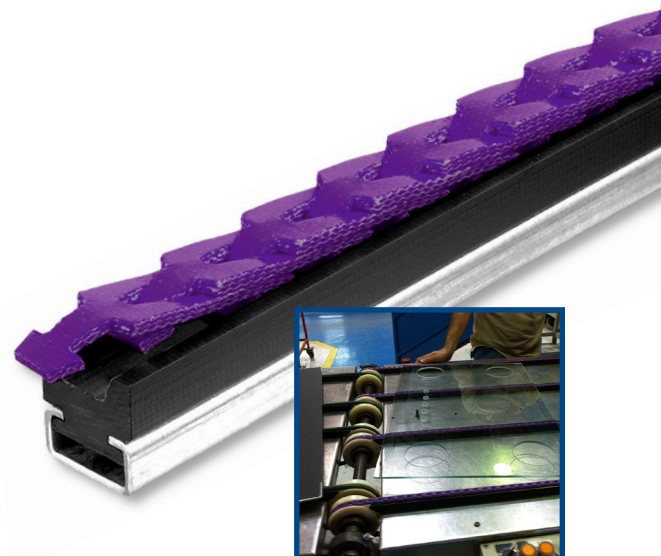
- Less money tied up in spare belting and no belt waste



Trackstar® UHMW Belt Guides

Long-wearing V and round belt guide fights friction and reduces costs on conveyor lines.

- Produced using only the highest quality UHMW-PE material to ensure minimum friction and maximum wear resistance
- Two-piece guide and channel design simplifies installation and facilitates future replacement of UHMW inserts, while allowing for thermal expansion



Trantorque® Keyless Locking Devices

Go keyless! Our single locking nut creates the perfect shaft-hub connection and allows quick, easy disassembly.

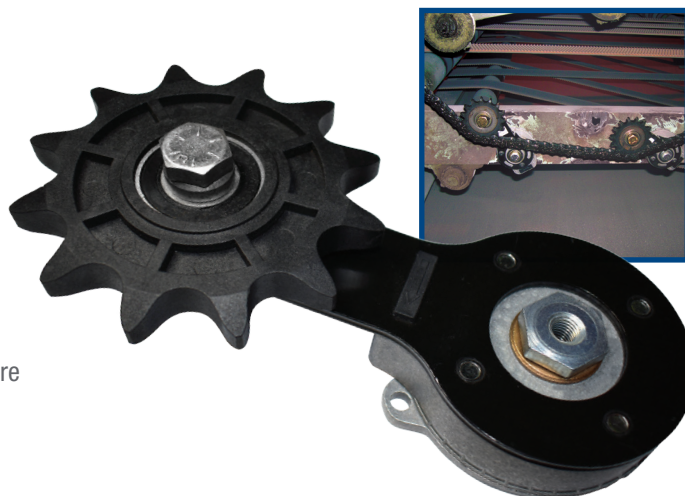
- Single locking nut for quick installation and adjustments — allows precise axial and radial positioning of components
- Mechanical shrink fit resists shock loads and torque reversals — ideal for zero backlash connections
- Exceptional torque transmission even with only partial shaft engagement



T-Max® Belt & Chain Tensioners

Eliminates manual re-tensioning of drives and the possibility of over-tensioning.

- Maintain correct drive belt tension automatically, achieving optimum drive performance
- Extend the life of critical drive components
- Reduce system downtime due to periodic re-tensioning
- Cut down operating and component replacement costs due to premature belt and chain failure





High Performance Link Belting

Made from a high performance composite polyester/polyurethane material, POWERTWIST DRIVE is the perfect solution for gypsum wallboard manufacturing facilities.

- Longer belt life in even the harshest environments
- Faster, easier installation without adjusting components – perfect for captive and fixed center drives
- Reduced noise, longer bearing life due to low belt vibration
- Reduced belt inventory – make to any length by hand

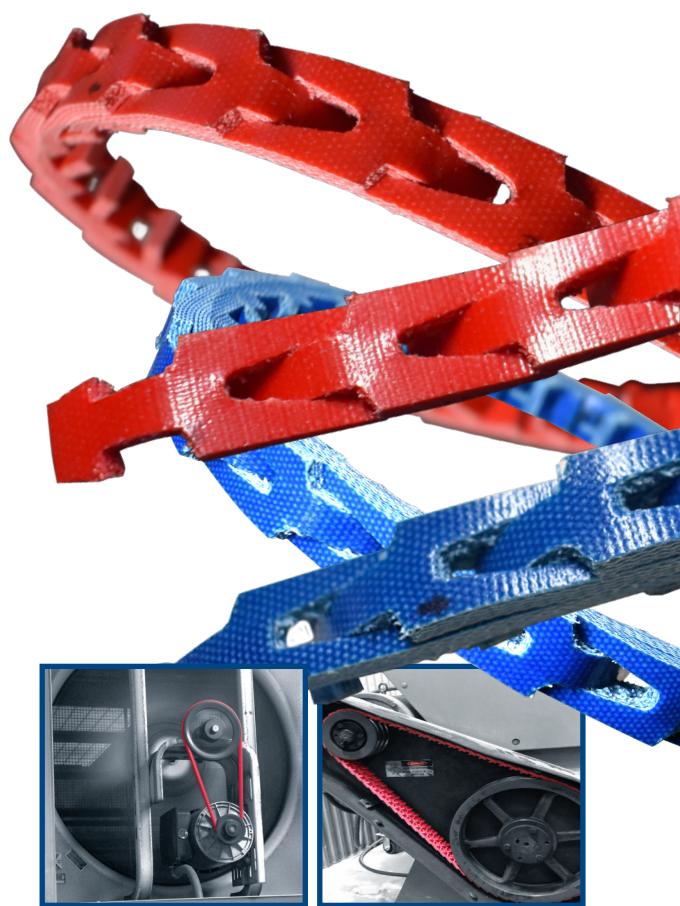
Available profiles:

Classical (red) – 3L, Z, A/4L, B/5L, C, D

Wedge (blue) – 3V, 5V, SPA, SPB, SPC

Perfect for:

HVAC Units and Pumps



Success Story: Commercial HVAC

Annual Cost Savings: \$54,400

Problem

1. Excess working capital tied up in inventory
2. Belt replacement performed every 6 months
3. Belts stretched and lost efficiency requiring re-tensioning

Solution

1. Inventory is reduced to a few boxes of B/5L POWERTWIST and belts are made to the required length on-site. The right amount of inventory is on hand at all times.
2. Life extended to 18 months
3. POWERTWIST does not stretch and does not require re-tensioning.

Added Value of POWERTWIST	Urethane Belts	POWERTWIST	Difference
Operation Cost Savings			
Cost of belt used per year	\$35	\$45	\$(10)
Freight/Shipping costs for belt ordered	\$16	\$6	\$10
Labor Costs Savings			
Time needed to change belts	\$75	\$10	\$65
Time needed for purchasing/warehousing/stocking of belts	\$100	\$50	\$50
Emergency purchase trips to restock/resupply belts	\$6	-	\$6
Labor Costs Savings			
No stretch means maintained unit efficiency	\$1,441	\$1,426	\$15
Cost Savings per unit per year			\$136
Total savings for 400 units with POWERTWIST			\$54,400