

DISTRIBUTION CENTERS

BELTS | PULLEYS | TENSIONERS



Fenner Drives Distribution Center Solutions

Throughput is crucial to Distribution Centers' performance. Fenner Drives' Distribution Center product portfolio is designed to increase throughput through longer belt life and less downtime.

POWERTWIST link belts, Eagle Poly-V, and Eagle O-rings are each aimed at boosting Roller Conveyor performance with a focus on straight conveyors, roller curves, transfer conveyors, and spur & merge conveyors.

You can tailor your belt usage to the needs within your facility. Eagle Poly-V and POWERTWIST ROLLER DRIVE are ideal on roller curves because they are abrasion resistant. HT and HEHT O-rings bump up your load capabilities compared to standard O-rings. These are just a few ways our belts can impact performance to keep your products moving for your customers.

Your company may be looking for ways to save energy and PowerMax Pulleys & Idlers provide a lightweight option that reduces energy consumption. Reduced energy consumption and the smooth surface of our pulleys combine to reduce noise on your conveyors. Our Engineers will work with your team to develop custom composite solutions, such as sorter shoes. Finally, our T-Max Tensioners can increase efficiency should you need a take-up on your belts or chains.

Take a look at our portfolio and reach out to us for more insight into how we can help you.

1.800.243.3374 | quote@fennerdrives.com



Upgrade live roller conveyors with longer-lasting, easy-to-install POWERTWIST

- **Install Booster:** drop in replacement for fast, easy installation without machine tear-down
- **Longevity Booster:** Lasts longer, especially on powered roller curves
- **Inventory Booster:** make to any length by hand – always have the right size in stock and reduce inventory
- Use POWERTWIST Roller Drive for V belts (for B/5L/17) and POWERTWIST Move for Round belts (9/16")



POWERTWIST
Roller Drive



POWERTWIST MOVE
9/16" Round

PowerMax™ Pulleys & Idlers

PowerMax idler pulleys and sprockets offer superior composite design and years of successful service.

- Molded of high-strength glass-reinforced nylon
- Precision sealed bearings are greased for life – never need relubrication
- Ultra smooth belt groove surface for quiet operation
- Lighter-weight composite design means less energy for start up and running
- State-of-the-art precision molding assures consistent quality parts



T-Max® Belt & Chain Tensioners

Eliminates the need to manually retension your drive systems.

- Allows belt installation without tools
- Maintain correct drive belt tension automatically, achieving optimum drive performance
- Reduce system downtime due to periodic belt retensioning
- Cut down operating and component replacement costs due to premature belt failure



EAGLE[®] POLY-V™



Longevity
Booster



Performance
Booster



Productivity
Booster

Made from polyurethane with elastic reinforcement, Eagle Poly-V belts provide the same load capacity as conventional rubber PJ belts with several additional benefits.

- **Longevity Booster:** Get longer belt life than rubber poly-v belts
- **Performance Booster:** increase performance on curves
- **Productivity Booster:** less down time keeps your line running for optimal throughput



EAGLE[®] O-RINGS

HT O-Rings

Replacement O-rings for live roller conveyors.

- Designed to be installed at 20% installation tension
- Available in Translucent Blue (3/16") and Translucent Red (.210")



HEHT O-Rings

Replacement O-rings for live roller conveyors.

- Designed to sit below roller surface when installed at 24% tension
- Available in Green (3/16") and Black (.210")



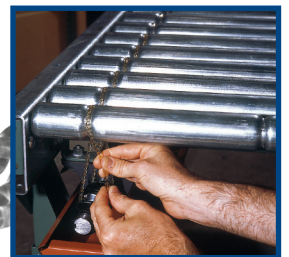
Twisted O-Rings

Easily installed in seconds with no tools and without dismantling line shaft or rollers.

- **INSTALL Booster:** Fast, easy fit, reducing downtime from dismantling line shaft or rollers – install in seconds
- Stock lengths in thicknesses from 1/8" - 3/8" (3-8mm)
- High coefficient of friction for optimal performance



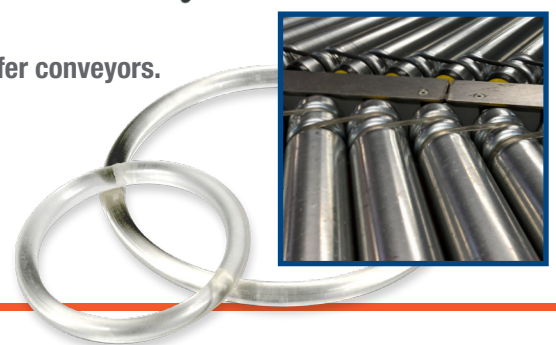
Longevity
Booster



Endless O-Rings

Replacement O-rings for line shaft, live roller conveyors and light-duty transfer conveyors.

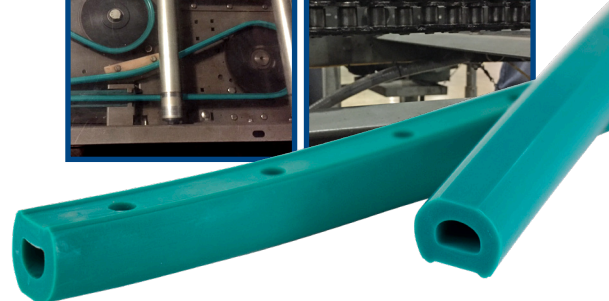
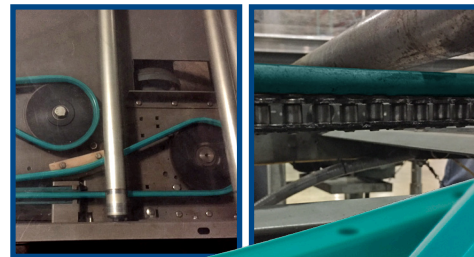
- Elastic with excellent memory and high coefficient of friction
- Popular 1/8", 3/16", and 1/4" sizes always in stock
- Solid polyurethane construction



EAGLE® Blue-Green Driver Pad

Don't be fooled by the inferior yellow, black, or green copycats; we've got the real thing. Often imitated, never duplicated.

- Manufactured to OEM specifications
- Always a consistent profile with ideal hole alignment
- Always in stock, ready to go to you!



Solution for the Floor, and the Roof!

POWERTWIST DRIVE provides unrivaled solutions for your HVAC needs.

- Reduce drive vibration and noise for quieter running systems
- Reduce V belt inventory – always have the right belt in stock
- Permanent replacement V belt – just fit it and forget it!
- Easy, fast installation – made to any length by hand in seconds
- Available in classical (red) and metric wedge (blue) profiles



Upgrade to a fast, permanent replacement that keeps buildings' occupants cool in summer, warm in winter and profitable all year long.

Conventional rubber V belts contain an inner cord which transmits vibrations from the motor to the driven components, vibrations that cause system noise and shorten the life of your bearings. POWERTWIST V belts combine a high-performance polyurethane elastomer reinforced with multiple plies of polyester into a segmented twist-lock design. This provides you a high strength, low stretch, vibration-dampening V belt with the same horsepower rating as classical section V belts. POWERTWIST V belts also offer high resistance to abrasion, shock loads, and harsh environments.

POWERTWIST V belts can be made to the required length by hand in seconds and rolled onto the drive like a bicycle chain. There's no machine tear-down required and no need to dismantle drive components. No tools, no problem! Plus, they have the same cross section as other belts so they can be installed on existing pulleys with no change in setup.

