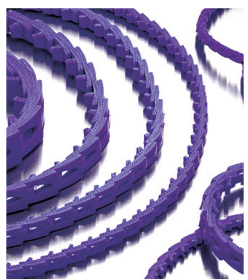


# GLASS MANUFACTURING

BELTS | TENSIONERS | KEYLESS LOCKING DEVICES | BELT GUIDE



# Innovative Products for the Glass Industry

Fenner Drives offers unique solutions to meet the demands of the glass manufacturing industry. To minimize rejection rates and ensure that the product stays free of stains and marks, we offer a variety of belts with top surfaces to assist in producing blemish-free products.

## **POWERTWIST MOVE®** High Performance Conveyor Belting

### **Will not mark or stain glass**

Leaves glass blemish-free throughout the manufacturing process.

### **Reduce line downtime**

Quickly make to length by hand; no tools or welding required.

### **Harsh environments? Bring it on**

The composite material is resistant to abrasion, extreme temperatures, oil, grease, and common industrial chemicals.

### **No changes in set-up**

POWERTWIST MOVE Belting drops right into your existing equipment.

**POWERTWIST MOVE Belting is available in V and round profiles.  
SIMPLY TWIST AND GO!**



## **POWERTWIST MOVE®** (Reduced Contact Surface)

Engineered specifically for the glass industry, POWERTWIST MOVE RCS combines the benefits of POWERTWIST MOVE Belting with reduced contact surface area from custom non-marking tabs.

- 99% reduction in contact area from standard V-belts
- The tab is formed out of special material that will not mark or scuff glass



## **POWERTWIST MOVE®** Bridge Top

POWERTWIST MOVE Bridge Top is supplied with PTFE inserts which act as a high temperature barrier between the product and the underlying belt. The non-marking inserts are perfect for contact temperatures up to 450°F (232°C).

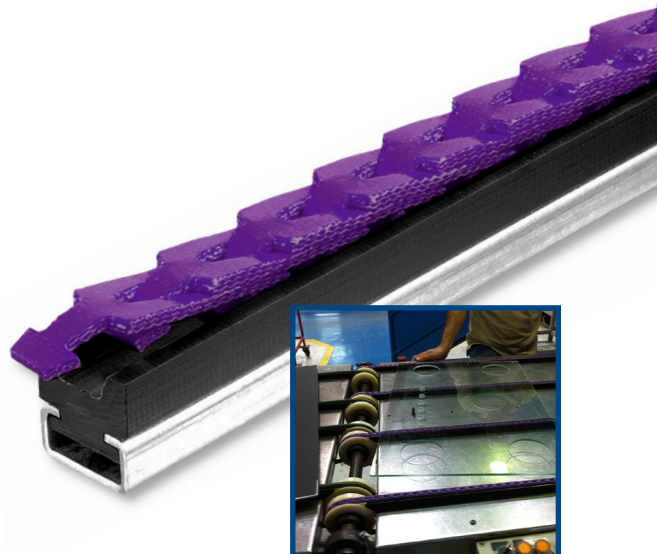




## **Trackstar®** UHMW Belt Guides

**Long-wearing V and round belt guide fights friction and reduces costs on conveyor lines.**

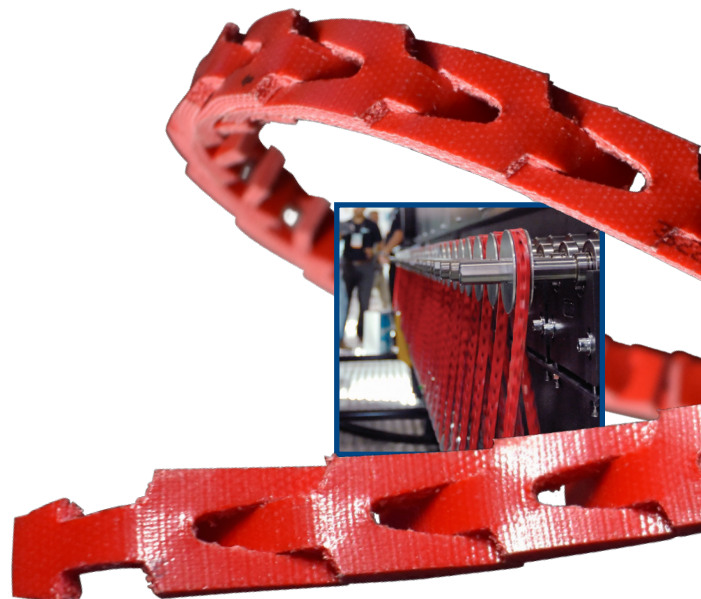
- Produced using only the highest quality UHMW-PE material to ensure minimum friction and maximum wear resistance
- Two-piece guide and channel design simplifies installation and facilitates future replacement of UHMW inserts, while allowing for thermal expansion



## **POWERWIST DRIVE®** High Performance Power Transmission V-Belting

**With a twist of the wrist, quickly and permanently replace endless rubber belts driving glass ovens and conveying lines.**

- Installs in minutes without dismantling components
- Easily made to any length by hand
- Increased belt flexibility and longer life
- Resistance to high temperatures and chemicals
- Drops right in to existing equipment



## **POWERWIST®** Antistatic Belting

**Keep dust at bay and ink printing crisp. POWERWIST Antistatic is 100% ISO 1813:1998 inspected and certified.**

- Ultralow resistance antistatic V-belts
- Unaffected by humidity levels
- Doesn't generate static electricity

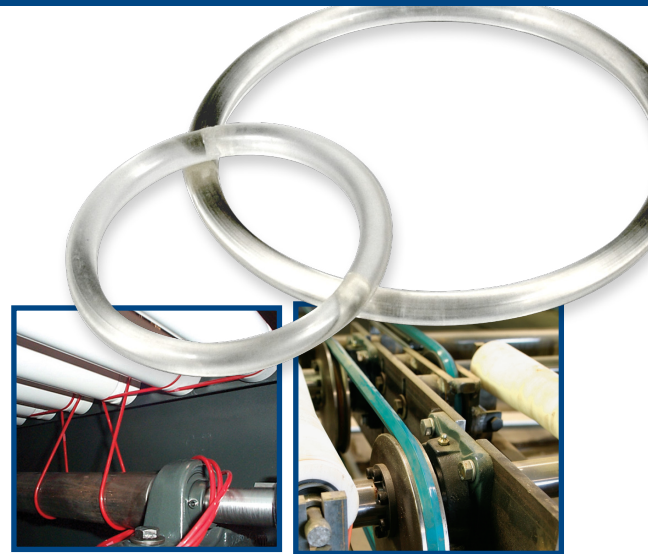


# Right Here, Right Now, Ready to Go to You!

## EAGLE® Polyurethane Belting

From light, medium or heavy duty conveying to custom profiles, Fenner Drives has the right product for your glass application.

- The most comprehensive line of high quality non-reinforced and reinforced products in the industry
- Eagle Hyfen® 85R and 95R offers a high strength, low stretch solution
- Eagle O-Rings – the perfect choice for live roller conveyor systems. Available in standard, HT and HEHT options.
- Eagle SuperGrip Top is an excellent alternative for extra grip on inclines
- Right here, right now, ready to go to you!



## B-LOC® & Trantorque® Keyless Locking Devices

The key to a good connection is really no key at all!

- Provides a keyless frictional connection
- Infinite radial and axial positioning of components
- Quick, easy installation and removal – greatly reduce downtime
- Zero backlash connections that transmit shock loads and torque reversals
- Transmits reversing bending moments



## FMAX® Belt & Chain Tensioners

Take up the slack... automatically!

- Maintain correct drive belt and chain tension automatically, achieving optimum drive performance
- Extend the life of critical drive components
- Reduce system downtime due to periodic re-tensioning
- Cut down operating and component replacement costs due to premature belt and chain failure

